

BISMARCK BASEBALL

2008 SOUVENIR PROGRAM



16-19 YEAR OLDS



BISMARCK PARKS AND
RECREATION DISTRICT
Est. 1927

KL&J's municipal and urban planning group embraces challenge and strives to exceed client expectations. We focus on serving the infrastructure and planning needs of cities and towns whether providing services directly to city governments or private developers.

Urban Planning

- Commercial and Retail Developments
- Neighborhoods
- Land Planning
- Landscape Architecture
- **Park Planning and Design**
- LEED Accredited
- Downtown Revitalization
- Recreational Facility Planning and Design

Municipal Engineering

- Solid Waste
- Storm Water
- Waste and Water Treatment Facilities
- Water Supply
- Water Storage
- Construction Engineering
- Project Design
- GIS
- Capital Improvement Plans
- Grant Applications and Financial Packaging

Land Development

- Master Planning
- Site Selection and Planning
- Engineering
- Environmental
- Transportation
- Traffic Engineering Studies
- Land Surveys and Construction Staking

Kadrmass
Lee &
Jackson

Engineers Surveyors
Planners

kljeng.com



The American Legion Lloyd Spetz Post No. 1

PO BOX 753
BISMARCK, ND 58502-0753
258-3101

On behalf of the American Legion, Lloyd Spetz Post No. 1 of Bismarck, I want to welcome all baseball fans to the 2008 home games of the American Legion Governors and Babe Ruth Reps baseball teams. It promises to be a great season for baseball in Bismarck.

The American Legion is particularly pleased with the Bismarck Parks & Recreation District as we work together to bring more opportunities for Bismarck youth to play baseball at the Legion level. With solid coordinated management being provided by the Bismarck Parks & Recreation District personnel and with the support and good offices of the American Legion, the future of baseball in Bismarck for 2008 and the years ahead look bright.

Thank you for joining us in support of American Legion Baseball, and for your support by your attendance at these home games. Be sure to cheer for your own Bismarck Legion Governors and Reps! Have a great time with Bismarck baseball.

Sincerely,

Lorne Norhe

Lorne Norhe, Commander



This year promises to be an action-packed season of baseball. The Governors and Reps will all be swinging for the fences this year. We welcome all the visiting teams and fans to Bismarck. We hope you enjoy our community and the many fine parks it has to offer. Thank you for taking the time to invest in our youth.

Best of luck to all the teams this season - "Let's play ball!"

Paul M. Quist

Paul Quist, President
Board of Park Commissioners



BISMARCK PARKS AND RECREATION DISTRICT
Est. 1927

Vision Technology
Microsoft CERTIFIED Partner
Information Systems Design & Development
Since 1989
www.vision-technology.com
(701) 222-3009

Bain agency
insurance & bonds
STEVE R. BAIN
President
Bain Agency, Inc.
P.O. Box 2016 Bismarck, ND 58502-2016
701/223-2233 Fax 701/223-0284 Cell 701/220-2233
steve@bainagency.com www.bainagency.com

Welcome to the 2008 Bismarck Baseball Season!

Governors

Coach: Mike Skytland
Assistant Coach: Blaine Steiner

Reps

Coach: Mike Gustavsson
Assistant Coach: Matt Power

Past Tournament Winners

STATE	WEST DIVISION TOURNAMENT
1995 Mandan	1995 Mandan
1996 Wahpeton	1996 Bismarck and Minot (tie)
1997 Bismarck	1997 Bismarck
1998 Jamestown	1998 Mandan
1999 Grand Forks	1999 Mandan
2000 Mandan	2000 Mandan
2001 Minot	2001 Bismarck
2002 Jamestown	2002 Minot
2003 Minot	2003 Bismarck
2004 Williston	2004 Dickinson
2005 Fargo	2005 Williston
2006 Minot	2006 Bismarck
2007 Minot	2007 Minot

State Titles

Fargo	22
Bismarck	11
Grand Forks	10
Mandan	9
Jamestown	7
Minot	9
Enderlin	3
Cooperstown	2
Drayton	2
Wahpeton	2
Linton	1
Williston	2



Governors' Coaches

MIKE SKYTLAND: Coach



2008: This is Coach Skytland's fifth year as Head Coach for the Governors. Last year the Governors were the Western Divisional Regular Season Champion and North Dakota State Class 'A' American Legion Runner-up. Prior to becoming the Head Coach, Skytland was the Bismarck Governor's assistant coach for three years. Coach Skytland was selected to help coach the Class A West Team in the 2008 North Dakota East-West American Legion Baseball All-Star Classic.

Before BGovs: Coach Skytland has been a coach with the Bismarck Parks and Recreation summer baseball program since 1988. During his years with Parks and Recreation, Skytland has been involved with Babe Ruth Baseball since 1989 and served as the coordinator for the 13-15 year-old Babe Ruth Program from 1995-2000. Coach Skytland's teams that won state championships at the Bambino (1993, 1995); 13-year-old (1993, 1994, 1997); and 14-year-old (1999) levels. His 1995 Bambino and 2000 15-year-old teams both won the Midwest Plains Regional Championship and placed fifth at the Babe Ruth World Series.

Off the field: Coach Skytland just completed his seventh year as a teacher at Bismarck High School, he teaches Economics and U.S. History. Coach Skytland also serves as an assistant boy's basketball coach. Previously, he taught six years at St. Mary's Grade School. Coach Skytland just resigned as Head Tennis Coach at the University of Mary in Bismarck.

He was the Head Men's Tennis Coach since 1993 and since 2001 also served as the Head Women's Tennis Coach. During the off-season, Skytland is an Instructor for the Midwest Baseball Academy Spring Camp at Bismarck State College.

BLAINE STEINER: Assistant Coach



2008: This is Coach Steiner's fifth year as Assistant Coach for the Governors. Steiner is also the web administrator for the Bismarck Governors web page, www.bgovs.org.

Before BGovs: Coach Steiner has been a coach with the Bismarck Parks and Recreation summer baseball program for over 17 years, starting in 1988. During his years with Parks and Recreation, Steiner has been involved with Babe Ruth Baseball since 1989 and served as the coordinator for the 13-15 year-old Babe Ruth Program in 2001. Steiner was an assistant coach on Mike Skytland's teams that won state championships at the Bambino (1993); 13-year-old (1993); and 14-year-old (1999) levels. Their 1995 Bambino and 2000 15-year-old teams both won the Midwest Plains Regional Championship and placed fifth at the Babe Ruth World Series. In 2003, Coach Steiner's 13-year-old Babe Ruth team won the state championship and competed in the Midwest Plains Regional.

Off the field: Coach Steiner just completed his eighth year as an Assistant Professor and the Athletic Training Program Director at "America's Leadership University", the University of Mary. He has over 15 years of athletic training experience including work with the Sioux Falls Stampede of the United States Hockey League and the Frappier Acceleration Programs in Bismarck and Minot; and providing athletic training services to area high schools.

Blaine is serving his second term as Vice-President of the North Dakota Athletic Trainers' Association (NDATA). During the off-season, Steiner is an Instructor for the University of Mary Marauders Baseball Camp and the Midwest Baseball Academy Spring Camp at Bismarck State College. Steiner also volunteers his time to help with the Open Your Heart Campaign sponsored by the Legionnaires of Lloyd Spetz Post No. 1 of the American Legion.

2008 Bismarck Governors



Front Row (L to R): Cody Erhardt, Jon Hausauer, Taylor Isakson
Middle Row (L to R): Bat Boy Ryan Suchy, Alex Deyle, Brady Wolf, Tyler Peterson, Tate Leapaldt, Assistant Coach Matt Power
Back Row (L to R): Coach Mike Skytland, Jacob Hruby, Matt Chuppe, Zach Wentz, Jon Herold, Hunter Johnson, Assistant Coach Blaine Steiner

Thursday, July 10 @ Devils Lake..... 5:30 p.m.
 Friday, July 11..... @ Grand Forks 5:30 p.m.
Monday, July 14 Minot..... 5:30 p.m.
 Tuesday, July 15..... @ Jamestown..... 5:30 p.m.
Thursday, July 17 Dickinson 5:30 p.m.
Tuesday, July 22 Mandan 7:30 p.m.
 Wednesday, July 23 @ Dickinson6:30 p.m.
Thursday, July 24 Wahpeton 5:30 p.m.
Saturday, July 26 Fargo..... 2 p.m.

All home games are in bold. Most times are Central Standard Time.

Tournaments

July 31 - August 2:
 Divisional Tournament @ Williston

August 6 - 10:
 ND Class 'A' Tournament @ Minot

August 13 - 17:
 Central Plains Regional Tournament @ Minot

August 22 - 26:
 American Legion World Series @ Shelby, NC



Tyler Peterson #3
 Position: OF, P
 Age: 17
 Height: 5'11" Weight: 165
 Bats: R Throws: R
 School: Bismarck High School
 Favorite Team: Twins
 Parents: Darrie and Janice



Cody Erhardt #4
 Position: CF
 Age: 18
 Height: 5'6" Weight: 155
 Bats: R Throws: R
 School: Bismarck State College
 Favorite Team: Twins
 Parents: Blaine and Toni



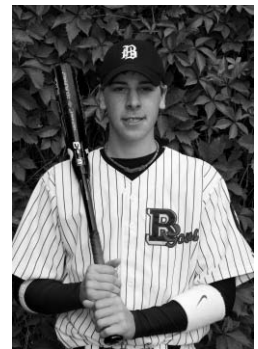
Jacob Hruby #5
 Position: OF, P
 Age: 18
 Height: 5'11" Weight: 165
 Bats: R Throws: R
 School: Bismarck High School
 Favorite Team: Twins
 Parents: Dale and Karla



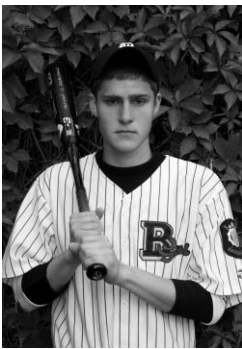
Alex Deyle #7
 Position: SS, P
 Age: 16
 Height: 5'10" Weight: 145
 Bats: R Throws: R
 School: Bismarck High School
 Favorite Team: Twins
 Parents: Jayson and Kim



Tate Leapoldt #9
 Position: P, IF, OF
 Age: 16
 Height: 5'11" Weight: 135
 Bats: L Throws: R
 School: Century High School
 Favorite Team: Twins
 Parents: Val and Eldy



Hunter Johnson #10
 Position: 3B, P
 Age: 17
 Height: 6'0" Weight: 170
 Bats: R Throws: R
 School: Century High School
 Favorite Team: Twins
 Parents: Rob and Kara



Taylor Isakson #11
 Position: C
 Age: 17
 Height: 5'11" Weight: 160
 Bats: R Throws: R
 School: Century High School
 Favorite Team: Phillies
 Parents: Chuck and Linda



Brady Wolf #19
 Position: 2B, P
 Age: 17
 Height: 5'11" Weight: 170
 Bats: R Throws: R
 School: Century High School
 Favorite Team: Cardinals
 Parents: Tim and Laurie



Zach Wentz #20
 Position: 1B, P, SS
 Age: 18
 Height: 6'2" Weight: 215
 Bats: R Throws: R
 School: Century High School
 Favorite Team: Twins
 Parents: Doug Wentz and
 Cathy Domres



Matt Chuppe #21

Position: IF, OF, P

Age: 17

Height: 6'1" Weight: 175

Bats: R Throws: R

School: St. Mary's High School

Favorite Team: Twins

Parents: Steve and Deb



Jonathan Herold #22

Position: IF, OF, P

Age: 17

Height: 6'1" Weight: 160

Bats: R Throws: R

School: St. Mary's High School

Favorite Team: Twins

Parents: John and Lori



Jon Hausauer #23

Position: IF, P

Age: 18

Height: 5'7" Weight: 175

Bats: R Throws: R

School: Bismarck High School

Favorite Team: Yankees

Parents: Dan and Sue

Advertising Specialties Athletic Equipment
Corporate Apparel Athletic Uniforms

LOGOS 'N SPORTS

1016 E. Owens Ave, Suite 100
Bismarck, ND 58501
701-222-2181
Toll Free 1-877-457-0140
logosnsports@qwest.net
Lane Olson

www.thebaseballandsftballstore.com

"An Equal Opportunity Employer"

FOR ALL TYPES OF ASPHALT AND
CONCRETE PAVING & RESURFACING *
SITE DEVELOPMENT * HIGHWAYS *
STREETS * PARKING LOTS * SAND
AND GRAVEL AGGREGATE AND FILL
MATERIALS

Northern
IMPROVEMENT CO.

Bismarck Office (701)223-6695 PO Box 1254 Bismarck, ND 58502	Fargo Office (701)277-1225 PO Box 2846 Fargo, ND 58108	Dickinson Office (701)225-5197 PO Box 1035 Dickinson, ND 58602
---	---	---

"QUALITY CONSTRUCTION SINCE 1935"

www.bisparks.org

REH RITTERBUSH - ELLIG - HULSING P.C.
ARCHITECTS
711 Riverwood Drive, Suite 1
Bismarck, North Dakota 58504-6220

WILLIAM D. ELLIG, A.I.A.
PRESIDENT

BUS: 701.223.7780 • FAX: 701.258.6564
E-MAIL: rehbill@btinet.net

Affiliated Offices in Dickinson & Williston

BISTRO

N. SCOTT SCHAFER
Owner / General Manager

Cell: 701 / 226.7987
scott@bistro1100.com
nscottschafers@hotmail.com

Bismarck - Mandan New Car Dealer's Association



P.O. Box 978 • Bismarck, ND 58502



WILHELM, INC.
1ST & BROADWAY • P.O. BOX 729
BISMARCK, NORTH DAKOTA 58502-0729



3205 Memorial Hwy. • PO Box 160 • Mandan, ND 58554



www.cedrictheel.com



P.O. Box 1317 • Highway 83 North
Bismarck, North Dakota 58502-1317



1500 2nd Street NE
Mandan, ND 58554
701-663-9851
800-732-9575



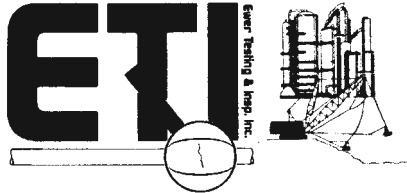
P.O. Box 1216
Bismarck, ND
58502-1216



800 East Bismarck Expressway
Box 1117
Bismarck, ND 58502

**DO BUCKLE
DON'T BOOZE**

**CLICK IT
OR TICKET.**
*BOOZE IT
& LOSE IT.*



LARRY R. EWER, C.W.I.
President

Post Office Box 577
 Bismarck, ND 58502
 Office: 701/223-6434
 Fax: 701-255-9167
 Cellular: 701/220-0120
 eti@btinet.net

- Nondestructive Testing • QA-QC
- Radiography • X-Ray • Ultrasonic
 - Mag Particle • Penetrants
- Visual Inspections • FAA E5WR233Y
- Welder Qualifications & Procedures
 - Eddy Current Inspection

Certified ASNT Level, II, III / AWS - CWI
 API-653 & 510

iGEAR

Quality products at cooperative prices.

A service of



National Information Solutions Cooperative

Clare Bauman
 clare.bauman@nisc.coop
 701.667.6851

Jake Raile
 jake.raile@nisc.coop
 701.667.6601

Troy Jochim
 troy.jochim@nisc.coop
 701.667.6600

Nathan Welstad
 nathan.welstad@nisc.coop
 701.667.6852

iGear

107 3rd Avenue NW
 Mandan, ND 58554
 www.igear.nisc.coop

- Personalized team and corporate apparel
- In-house embroidery and screen printing
- Annual meeting gifts
- Service award programs
- Cutting edge promotional products

PENNANT FEVER

Vintage Sports Cards and Memorabilia WANTED TO BUY



Gene Severson

P.O. Box 7111
 Bismarck ND 58507

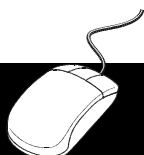
701-255-3621

eBay Store:

pennantfeverofnd
 gesev@bis.midco.net



**Making
 baseball in
 Bismarck
 better.**



Check us out at www.bismarckbaseballboosters.com.

Unassisted Triple Play.

Income Taxes.

Fortunately, we can help
with the more difficult of
the two.



PO Box 862
Bismarck, ND 58502
701.255.7259
john@powercpa.biz
www.powercpa.biz

PDF created with pdfFactory Pro trial version www.pdffactory.com

Dakota Gaming Supply

Sports Cards 4U

SportsCards • Autographs • Magic • Yu-Gi-Oh
• Supplies • Memorabilia Cards • Poker Chips

Buy • Sell • Trade
We will E-Bay your item!

(701)224-0514 • 1-800-637-1293 • 1308 East Avenue F, Bismarck, ND 58501

Reps' Coaches

MIKE GUSTAVSSON: Coach



Mike has been apart of the Bismarck Parks & Recreation since 2000. Here he has coached 7 years of Babe Ruth (16 & 16-18 year old teams), all 7 years the teams were participants in the Regional tournament. They took 3rd place in 2001 and 2007. In 2003, he became the Head Coach of the Bismarck Representatives (16 & 17 Class B Legion team). The Reps made the State Tournament in 2003.

Mike Gustavsson has also been the Head Coach at Century since 2004. He began coaching baseball in 2000 at University of Mary. There he was the Head Junior Varsity Coach for 2 years. In 2002 & 2003, Mike was the Assistant Coach at Bismarck State College.

Mike is in his 5th year of teaching at Saint Anne School, where he teaches K-8 Physical Education and 6, 7 & 8 Health.

Mike and his wife Valerie, have two lovely daughters, Sydney 5 ½ years old and Savannah 2 years old

MATT POWER: Assistant Coach



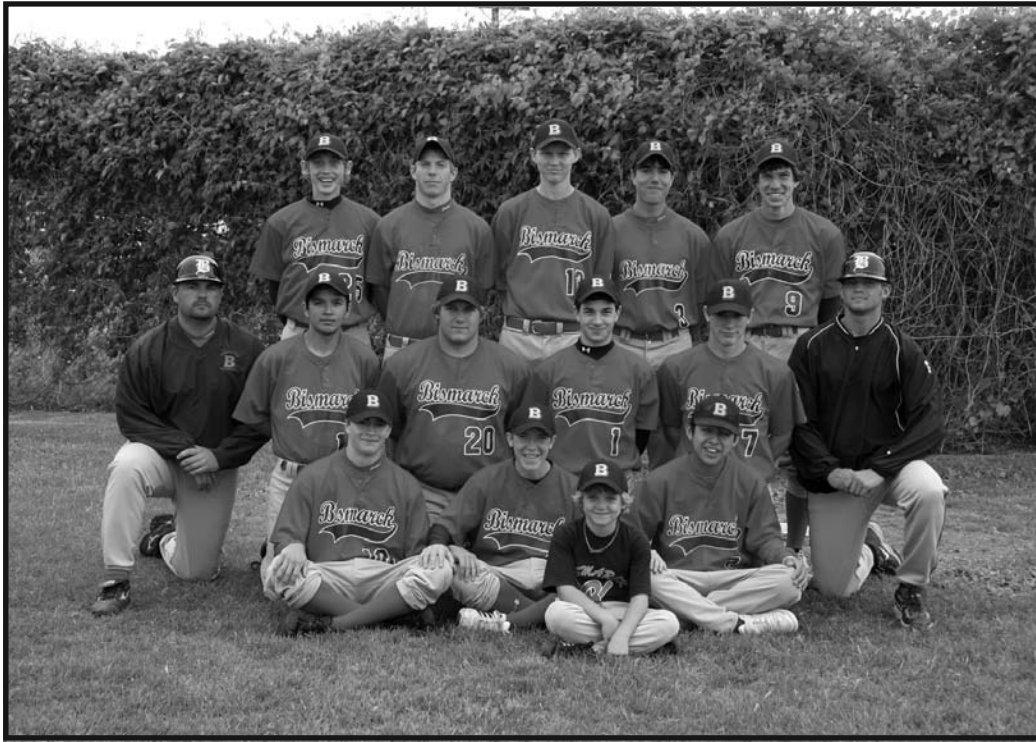
2008: This is Coach Power's first year working with the Bismarck American Legion and Senior Babe Ruth baseball teams. Power's primary responsibility this summer is as the Assistant Coach of the Bismarck Representatives Senior Babe Ruth Baseball team. When helping out with the BGovs, Power will work with the pitchers and infielders.

Before BGovs: Coach Power was a member of the University of Mary baseball team from 2003-2006. He was also an assistant coach for the Marauder baseball team for one year. Power was a player on Coach Skytland and Steiner's 1995 Bambino (12 & under) Babe Ruth Baseball team that won the ND State Championship, Midwest Plains Regional Championship and placed fifth at the Babe Ruth World Series. Power played for the Bismarck Governors in 1999. Coach Power has six years of coaching experience with the Bismarck Babe Ruth All-Star baseball program, leading his teams to the 2003 and 2005 Babe Ruth 13-15-year-old World Series.

Off the field: Coach Power received his bachelor's degree in Physical Education from the University of Mary in 2006 and is currently pursuing a master's degree in Business Administration from the same school. Power just completed his first year as the graduate assistant coach for the U-Mary softball team. During the off-season, Power is an Instructor for the University of Mary Marauders Baseball Camp and the Midwest Baseball Academy

Spring Camp at Bismarck State College.

2008 Bismarck Reps



Front Row (L to R): Greg Hilzendeger, Erik Peterson, Bat Boy Andrew Feist, Silas Standing Elk

Middle Row (L to R): Coach Mike Gustavsson, Justin Vondall, Jon Feist, Brett Ellwein, Sam Ingemansen, Assistant Coach Matt Power

Back Row (L to R): Stephen Glasser, Matt Stoehr, Steve Slaubaugh, Aric Heinert, Mike Mahowald

Wednesday, July 9 @ Minot Metros 5:30 p.m.
Tuesday, July 10 Harvey..... 5:30 p.m.*
 Monday, July 14..... Washburn 5:30 p.m.
 Tuesday, July 17 Minot Metros & SBR TBD*

All home games are in bold. Most times are Central Standard Time.

Tournaments

July 10 - 13:
 Williston Senior Babe Ruth Tournament

July 18 - 21:
 ND 16-18 Year Old Babe Ruth State Tournament
 @ Williston

July 24 - 29:
 Midwest Plains Regional Tournament
 @ Charleston, Mississippi

August 7 - 16:
 16-18 Year Old Babe Ruth World Series
 @ Newark, OH



Brett Ellwein #2
 Position: 2B, OF
 Age: 16
 Height: 5'8" Weight: 137
 Bats: R Throws: R
 School: Century High School
 Favorite Team: Twins
 Parents: Carol and Greg



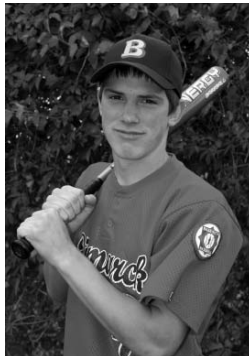
Silas Standing Elk #2
 Position: 2B, OF, P
 Age: 17
 Height: 5'5" Weight: 135
 Bats: R Throws: R
 School: Bismarck High School
 Favorite Team: Athletics
 Parents: Joe Standing Elk and
 Radell Howard



Aric Heinert #3
 Position: P, SS, OF
 Age: 17
 Height: 5'11" Weight: 160
 Bats: R Throws: R
 School: Century High School
 Favorite Team: Yankees
 Parents: Darrin and Jennifer



Erik Peterson #4
 Position: 2B, SS, P, C, OF
 Age: 16
 Height: 5'5" Weight: 146
 Bats: R Throws: R
 School: Century High School
 Favorite Team: Red Sox
 Parents: Scott and Vicki



Sam Ingemansen #7
 Position: C, SS, 2B, P
 Age: 16
 Height: 5'9" Weight: 145
 Bats: R Throws: R
 School: Bismarck High School
 Favorite Team: Red Sox
 Parents: Mike and Margo



Mike Mahowald #9
 Position: OF, 3B, SS, P
 Age: 16
 Height: 5'10" Weight: 155
 Bats: R Throws: R
 School: Century High School
 Favorite Team: Twins
 Parents: Doug and Kayla



Steven Slaubaugh #13
 Position: 2B, SS, 3B, P
 Age: 16
 Height: 6'3" Weight: 150
 Bats: R Throws: R
 School: Shiloh
 Favorite Team: Tampa Bay Rays
 Parents: Brent and Lisa



Matt Stoehr #14
 Position: P, OF, 1B
 Age: 17
 Height: 5'10" Weight: 165
 Bats: L Throws: L
 School: Century High School
 Favorite Team: Orioles
 Parents: Paul and Kelley



Justin Vondall #16
 Position: RF
 Age: 17
 Height: 5'8" Weight: 145
 Bats: R Throws: R
 School: South Central
 Favorite Team: Red Sox
 Parents: Amanda Engel



Greg Hilzendeger #18

Position: OF, 1B, P
Age: 16
Height: 5'8" Weight: 155
Bats: L Throws: L
School: Century High School
Favorite Team: Cubs
Parents: Kevin and Kathi



Jonathan Feist #20

Position: 3B, 1B, OF, P
Age: 16
Height: 5'8" Weight: 200
Bats: R Throws: R
School: Bismarck High School
Favorite Team: Twins
Parents: Jeff and Bev



Stephen Glasser #25

Position: SS, 2B, P
Age: 17
Height: 5'10" Weight: 130
Bats: R Throws: R
School: Bismarck High School
Favorite Team: Twins
Parents: Larry and Carmen



James Carroll #22

Position: 3B, P, OF, 1B
Age: 16
Height: 5'11" Weight: 175
Bats: R Throws: R
School: St. Mary's High School
Favorite Team: Cubs
Parents: Shane and Claudette

Park, Playground
Athletic Equipment

Dakota Fence

Larry Grondahl
Sales Manager

1202 18th Street W. • Williston, ND 58801
800-726-4064 • Office 701-572-7897 • Fax 701-572-0824
Cell 701-770-7897 • E-mail larry@dakotafence.com

**The ground-source heat pump:
innovation at work in our local communities**

**ELECTRIC HEAT is efficient and
economical for heating AND cooling!**

If you plan to build or remodel, consider a simple solution that uses the abundant, natural energy the earth stores to heat and cool your home—called **geothermal**.

To learn more about the ground-source heat pump, call Capital Electric Cooperative at (701) 223-1513 or visit www.capitalelec.com today. **We're committed to helping our members find efficient and economical heating and cooling solutions.**



**CAPITAL
ELECTRIC
COOPERATIVE, INC.**

Your Touchstone Energy® Cooperative

Flash PRINTING

Copies Quick as a Flash!

- Self Service Copies
- Black & White Copies
- Full Color Copies
- Press Dept.
- Bindery Dept.
- Complete Art Dept.
- Announcements
- Letterhead
- Business Cards
- Envelopes
- Brochures
- Laminating
- Carbonless Forms

904 E. Front Avenue • Bismarck, ND 58504
Ph: 701-258-2727 • Fax: 701-258-7419
E-mail: flashp@btinet.net



UNIVERSAL
ATHLETIC

www.universalathletic.com



Proud to support
Baseball across North Dakota.

We Get You Into The Game!

- Softball-Baseball • Hockey • Hunting • Golf • Ski • Sport & Casual Shoes and Clothing • Bikes • Fishing • Camping • Archery
- Snowboard • Soccer • Guns • Exercise • Water Skis • Basketball
- Inline Skates • Snowboard • Paintball • Optics • more

SCHEELS®

Kirkwood Mall • Bismarck • 255-7255

www.bisparks.org

AMERICAN LEGION



We Sponsor Legion Baseball



BASIN ELECTRIC POWER COOPERATIVE

A Touchstone Energy® Cooperative 



BISMARCK

OPTIMIST CLUB

Bismarck Optimist Club meets Tuesdays at Noon

China Star Restaurant, Bismarck

Contact Dave Leftwich at (701) 258-7203 for more details.



**DO YOU HAVE
SOMETHING
TO SAY?**

**LET US HELP
YOU SAY IT.**



**mann
SIGNS, INC**

1401 s 12th st, suite 3
bismarck, nd 58504
701-355-1111
www.mannsignsinc.com

Bismarck State College offers a proud tradition of outstanding athletic teams in baseball, basketball, volleyball and golf.



BSC provides...

- **Transfer courses in nearly any field**
- **Career and technical programs for today's jobs**
- **Cooperative programs offering students four-year degrees at BSC**
- **Online courses for anytime, anywhere learning**
- **Thousands of dollars for scholarships**

Dollar-for-dollar, BSC is one of the best education values around, with tuition well below that of many colleges, public or private.

Bismarck State College
Flexible • Affordable • Transferable
At BSC, it's doable!

Come visit us!

For campus tours, contact
Marla.Hagemeister@bsc.nodak.edu

For questions, contact
Deidre.Pugh@bsc.nodak.edu

(701) 224-5429 or
(800) 445-5073



bismarckstate.edu

**Good luck
to all teams!**



JIM RESSLER TRUCKING INC.

**PO Box 2546
Bismarck, ND 58502**

**701-258-3550
1-800-525-3637**